



Lightning Card reader



TYPE C Card reader



Ref#: 20240717

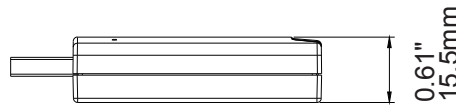
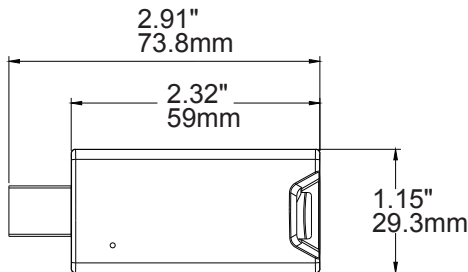
The BMDG-L01-ETC energy monitoring dongle is for collecting energy consumption data in order to generate energy report. ETC dongle also has RTC (Real Time Clock) Function.

FEATURES

- Powered by USB-A receptacle.
- Embedded RTC for time syncing for all devices in the Zone, include internal battery to keep time during power outage.
- Record energy consumption raw log in TF card.

PHYSICAL DIMENSIONS

Unit: inch/mm



TECHNICAL DATA

Input Voltage: USB 5V
Input Current: 500mA Max

Bluetooth Transmit: 100ft Max
Radio Frequency: 2.4GHz ± 75MHz
Bluetooth Version: 5.0
Housing Material: UL 94-V0,
Indoor Use Only
Operating Temperature: -30°C to 55°C,
-22°F to 131°F
Storage Temperature: -30°C to 85°C,
-22°F to 185°F
IP Rating: IP20
Color: White

Comply to UL1376, RoHS

ORDERING INFORMATION

MODEL	DESCRIPTION
BMDG-L01-ETC	Energy Monitoring USB Dongle and Real Time Clock
BMCR-LL	Lightning Card reader
BMCR-LC	TYPE-C Card reader

WARRANTY

Five year limited warranty.

Specifications subject to change without notice.